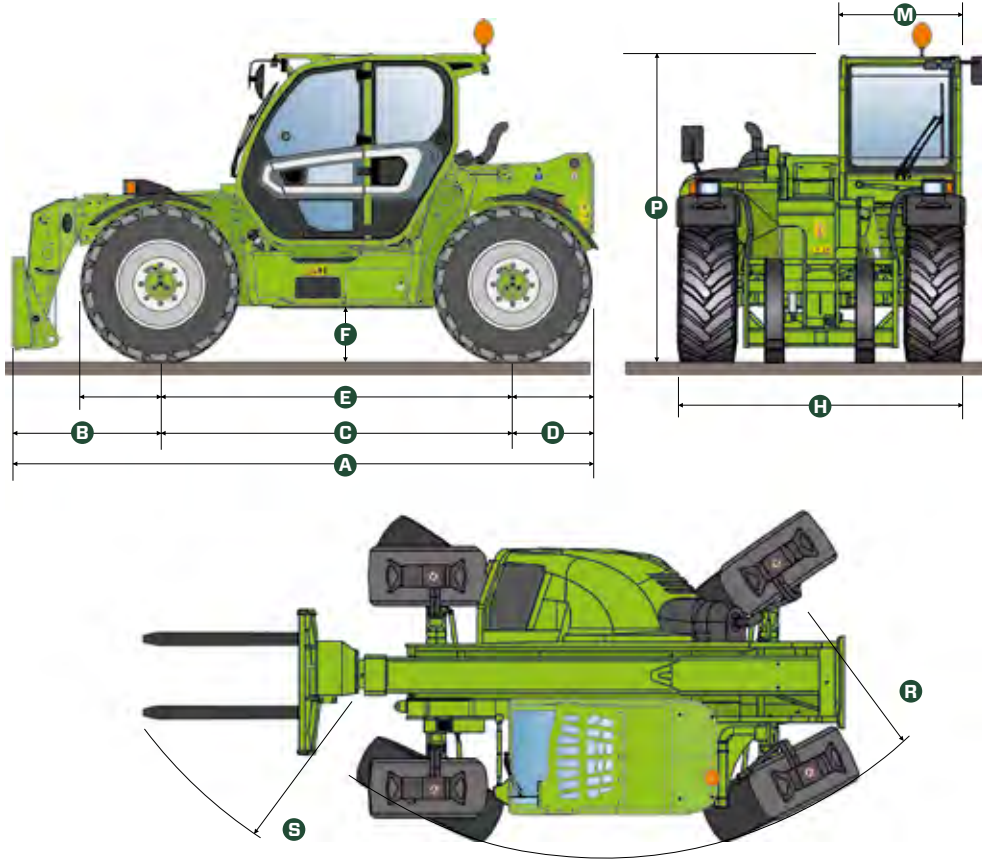
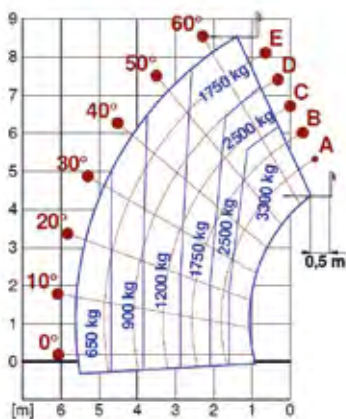


Technical characteristics

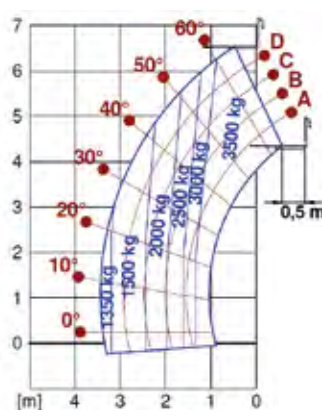


MODEL	DIMENSIONS	A	B	C	D	E	F	H	M	P	R	S
TF35.7-140	mm	4310	970	2740	600	3910	380	2250	1010	2240	4095	4740
TF35.7CS-140	mm	4310	970	2740	600	3910	380	2250	1010	2300	4095	4740
TF33.9-140	mm	4330	990	2740	600	3910	380	2250	1010	2240	4095	4740
TF33.9CS-140	mm	4330	990	2740	600	3910	380	2250	1010	2300	4095	4740
TF42.7-116	mm	4730	1215	2810	705	4104	460	2310	1010	2530	3985	4800
TF42.7CS-116	mm	4730	1215	2810	705	4104	460	2310	1010	2530	3985	4800
TF42.7-136	mm	4730	1215	2810	705	4104	460	2310	1010	2530	3985	4800
TF42.7CS-136	mm	4730	1215	2810	705	4104	460	2310	1010	2530	3985	4800
TF38.10-116	mm	4760	1245	2810	705	4104	460	2310	1010	2530	3985	4800
TF38.10CS-116	mm	4760	1245	2810	705	4104	460	2310	1010	2530	3985	4800
TF38.10-136	mm	4760	1245	2810	705	4104	460	2310	1010	2530	3985	4800
TF38.10CS-136	mm	4760	1245	2810	705	4104	460	2310	1010	2530	3985	4800
TF42.7CS-145 CVTRONIC	mm	4730	1215	2810	705	4104	460	2310	1010	2530	3985	4800
TF38.10CS-145 CVTRONIC	mm	4760	1245	2810	705	4104	460	2310	1010	2530	3985	4800
TF42.7CS-136	mm	4730	1215	2810	705	4104	460	2310	1010	2530	3985	4800
TF38.10CS-136	mm	4760	1245	2810	705	4104	460	2310	1010	2530	3985	4800
TF42.7TTCS-136	mm	4730	1215	2810	705	4104	460	2310	1010	2530	3985	4800
TF38.10TTCS-136	mm	4760	1245	2810	705	4104	460	2310	1010	2530	3985	4800
TF42.7TTCS-145 CVTRONIC	mm	4730	1215	2810	705	4104	460	2310	1010	2530	3985	4800
TF38.10TTCS-145 CVTRONIC	mm	4760	1245	2810	705	4104	460	2310	1010	2530	3985	4800

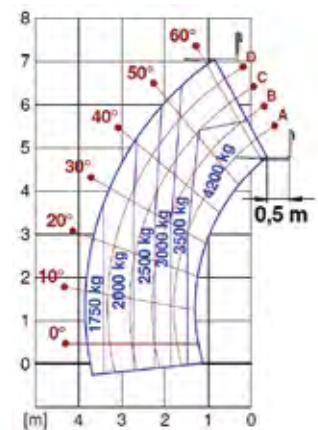
MODEL	TF35.7-140	TF35.7 CS-140	TF33.9-140	TF33.9 CS-140	TF42.7-116	TF42.7 CS-116	TF42.7-136	TF42.7 CS-136	TF38.10-116
Unladen weight (kg)	6800	6950	7300	7450	7800	8000	7800	8000	8300
Maximum load capacity (kg)	3500	3500	3300	3300	4200	4200	4200	4200	3800
Lift height (m)	6,6	6,6	8,6	8,6	7	7	7	7	9,5
Maximum reach (m)	3,5	3,5	5,7	5,7	3,8	3,8	3,8	3,8	6,6
Reach at max. load capacity (m)	1,3	1,3	1,6	1,6	1,5	1,5	1,5	1,5	1,9
Load capacity at max. reach (kg)	1350	1350	650	650	1750	1750	1750	1750	800
Load capacity at max. lift height (kg)	3500	3500	1750	1750	3500	3500	3500	3500	1700
Boom side-shift (mm)	-	-	-	-	-	-	-	-	-
Frame levelling (%)	-	-	-	-	-	-	-	-	-
Engine	Deutz TCD3.6	Deutz TCD3.6	Deutz TCD3.6	Deutz TCD3.6	Perkins 904J	Perkins 904J	Perkins 904J	Perkins 904J	Perkins 904J
Engine power (kW/HP)	100/136	100/136	100/136	100/136	85,9/116,8	85,9/116,8	100/136	100/136	85,9/116,8
Anti-pollution technology	Stage V - SCR + DPF + DOC	Stage V - SCR + DPF + DOC	Stage V - SCR + DPF + DOC	Stage V - SCR + DPF + DOC	Stage V - SCR + DPF + DOC	Stage V - SCR + DPF + DOC	Stage V - SCR + DPF + DOC	Stage V - SCR + DPF + DOC	Stage V - SCR + DPF + DOC
Reversible fan	YES	YES	YES	YES	YES	YES	YES	YES	YES
Maximum speed (km/h)	40	40	40	40	40	40	40	40	40
Fuel tank capacity (l)	85	85	85	85	140	140	140	140	140
AdBlue tank capacity (l)	12	12	12	12	18	18	18	18	18
Hydrostatic transmission	YES - 2V	YES - 2V	YES - 2V	YES - 2V	YES - 2V	YES - 2V	YES - 2V	YES - 2V	YES - 2V
EPD	Plus	Plus	Plus	Plus	Plus	Plus	Plus	Plus	Plus
Hydraulic pump	LS+FS	LS+FS	LS+FS	LS+FS	LS+FS	LS+FS	LS+FS	LS+FS	LS+FS
Delivery/pressure (l/min-bar)	125-210	125-210	125-210	125-210	151-250	151-250	139-250	139-250	151-250
Hydraulic oil tank capacity (l)	85	85	85	85	100	100	100	100	100
Cab finishing	ECO	ECO	ECO	ECO	ECO	ECO	ECO	ECO	ECO
ASCS	Light	Light	Light	Light	Light	Light	Light	Light	Light
ROPS, FOPS LEV II Cab	YES	YES	YES	YES	YES	YES	YES	YES	YES
Cab controls	Electronic joystick control	Electronic joystick control	Electronic joystick control	Electronic joystick control	Electronic joystick control	Electronic joystick control	Electronic joystick control	Electronic joystick control	Electronic joystick control
Reverse shuttle	Dual reverse	Dual reverse	Dual reverse	Dual reverse	Dual reverse	Dual reverse	Dual reverse	Dual reverse	Dual reverse
Boom suspension	OPT	OPT	OPT	OPT	OPT	OPT	OPT	OPT	OPT
Tac-lock	YES	YES	YES	YES	YES	YES	YES	YES	YES
Permanent four-wheel drive	YES	YES	YES	YES	YES	YES	YES	YES	YES
All-wheel steering	YES	YES	YES	YES	YES	YES	YES	YES	YES
Standard tyres	400/70-24	400/70-24	400/70-24	400/70-24	400/70-24	400/70-24	400/70-24	400/70-24	400/70-24



TF33.9

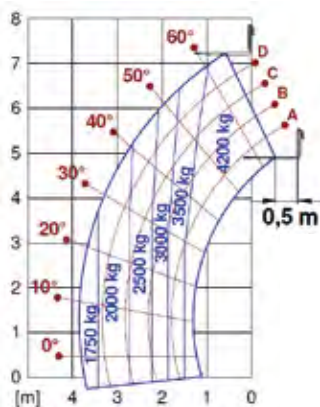


TF35.7

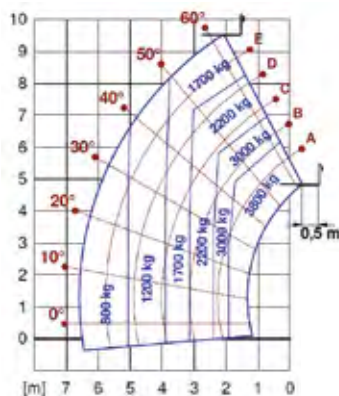


TF42.7

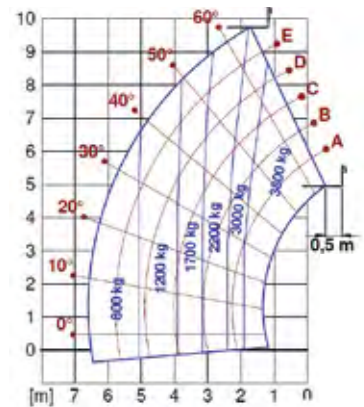
TF38.10 CS-116	TF38.10-136	TF38.10 CS-136	TF42.7 CS-145-CVTRONIC	TF38.10 CS-145-CVTRONIC	TF42.7 TT-136	TF38.10 TT-136	TF42.7 TTCS-136	TF38.10 TTCS-136	TF42.7 TTCS-145-CVTRONIC	TF38.10 TTCS-145-CVTRONIC
8500	8300	8500	8000	8500	8200	8800	8200	8800	8200	8800
3800	3800	3800	4200	3800	4200	3800	4200	3800	4200	3800
9,5	9,5	9,5	7	9,5	7,2	9,7	7,2	9,7	7,2	9,7
6,6	6,6	6,6	3,8	6,6	3,8	6,6	3,8	6,6	3,8	6,6
1,9	1,9	1,9	1,5	1,9	1,5	1,9	1,5	1,9	1,5	1,9
800	800	800	1750	800	1750	800	1750	800	1750	800
1700	1700	1700	3500	1700	4200	3000	4200	3000	4200	3000
-	-	-	-	-	+/- 150	+/- 180	+/- 150	+/- 180	+/- 150	+/- 180
-	-	-	-	-	+/- 8	+/- 8	+/- 8	+/- 8	+/- 8	+/- 8
Perkins 904J	Perkins 904J	Perkins 904J	Deutz TCD3.6	Deutz TCD3.6	Perkins 904J	Perkins 904J	Perkins 904J	Perkins 904J	Deutz TCD3.6	Deutz TCD3.6
85,9/116,8	100/136	100/136	105/143	105/143	100/136	100/136	100/136	100/136	105/143	105/143
Stage V - SCR + DPF + DOC	Stage V - SCR + DPF + DOC	Stage V - SCR + DPF + DOC	Stage V - SCR + DPF + DOC	Stage V - SCR + DPF + DOC	Stage V - SCR + DPF + DOC	Stage V - SCR + DPF + DOC	Stage V - SCR + DPF + DOC	Stage V - SCR + DPF + DOC	Stage V - SCR + DPF + DOC	Stage V - SCR + DPF + DOC
YES	YES	YES	YES	YES	YES	YES	YES	YES	YES	YES
40	40	40	40	40	40	40	40	40	40	40
140	140	140	140	140	140	140	140	140	140	140
18	18	18	18	18	18	18	18	18	18	18
YES - 2V	YES - 2V	YES - 2V	CVTronic	CVTronic	YES - 2V	YES - 2V	YES - 2V	YES - 2V	CVTronic	CVTronic
Plus	Plus	Plus	Plus	Plus	Plus	Plus	Plus	Plus	Plus	Plus
LS+FS	LS+FS	LS+FS	LS+FS	LS+FS	LS+FS	LS+FS	LS+FS	LS+FS	LS+FS	LS+FS
151-250	139-250	139-250	145-250	145-250	139-250	139-250	139-250	139-250	145-250	145-250
100	100	100	100	100	100	100	100	100	100	100
ECO	ECO	ECO	ECO	ECO	ECO	ECO	ECO	ECO	ECO	ECO
Light	Light	Light	Light	Light	Light	Light	Light	Light	Light	Light
YES	YES	YES	YES	YES	YES	YES	YES	YES	YES	YES
Electronic joystick control	Electronic joystick control	Electronic joystick control	Electronic joystick control	Electronic joystick control	Electronic joystick control	Electronic joystick control	Electronic joystick control	Electronic joystick control	Electronic joystick control	Electronic joystick control
Dual reverse	Dual reverse	Dual reverse	Dual reverse	Dual reverse	Dual reverse	Dual reverse	Dual reverse	Dual reverse	Dual reverse	Dual reverse
OPT	OPT	OPT	OPT	OPT	OPT	OPT	OPT	OPT	OPT	OPT
YES	YES	YES	YES	YES	YES	YES	YES	YES	YES	YES
YES	YES	YES	YES	YES	YES	YES	YES	YES	YES	YES
YES	YES	YES	YES	YES	YES	YES	YES	YES	YES	YES
400/70-24	400/70-24	400/70-24	400/70-24	400/70-24	400/70-24	400/70-24	400/70-24	400/70-24	400/70-24	400/70-24



TF42.7TT



TF38.10



TF3810TT